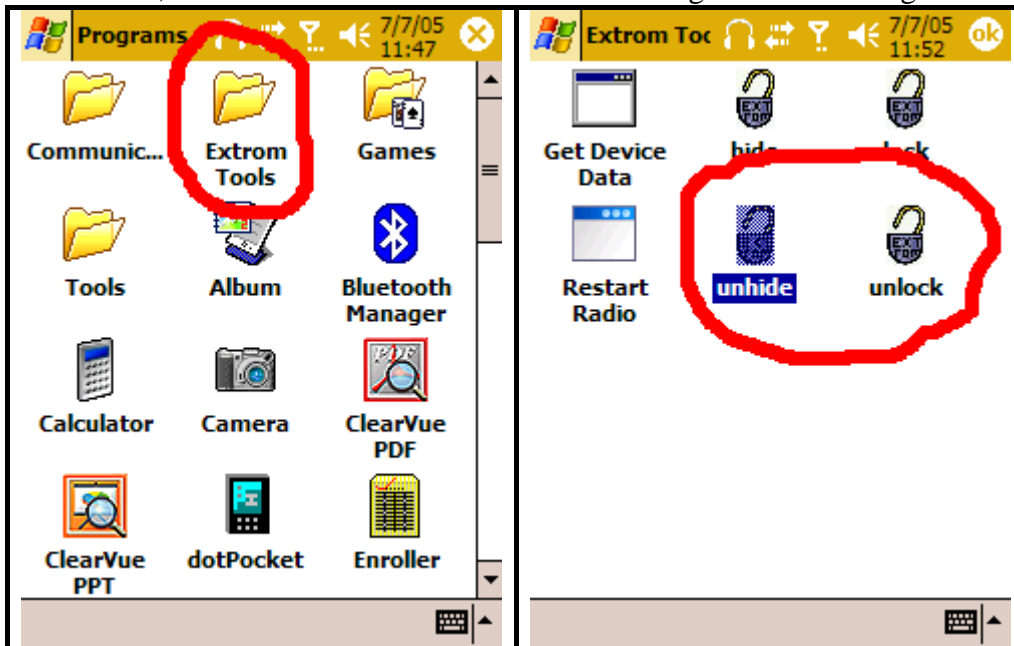


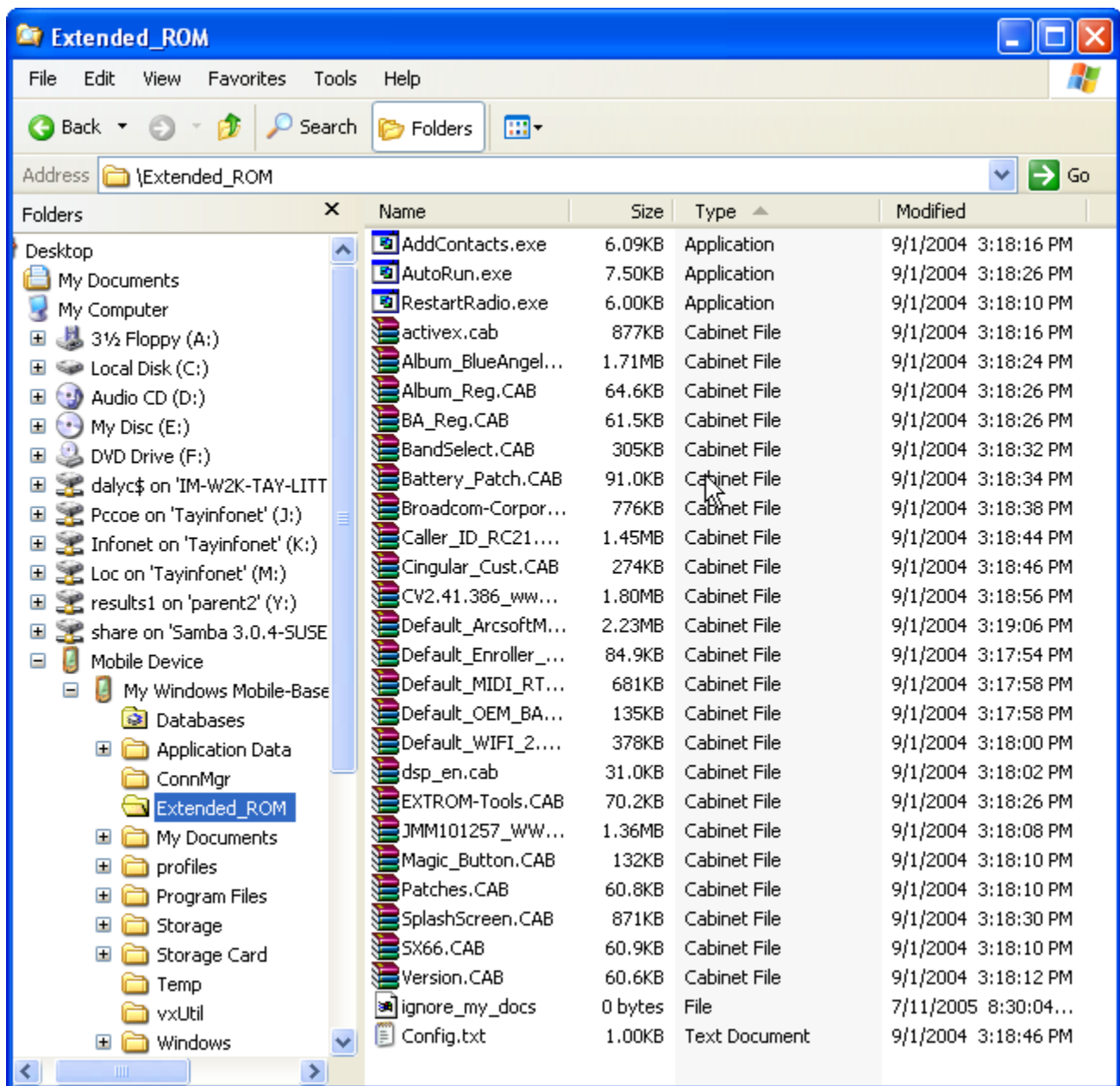
SX66 Standardization Project

Extended ROM Installation Instructions

1. Download the following two items for the SX66 Standardization Project website: 1. The Extended ROM you wish to install. 2. The Extended ROM Tools CAB file.
2. Using Window File Explorer, create the folders c:\EXT-ROM and c:\EXT-Backup.
3. Using [WinRAR](#), uncompress the Extended ROM file to c:\EXT-ROM.
4. Place your phone into the cradle, and allow to sync up with you computer. At this point, if there is anything on your phone that you wish to keep, make a backup of it now.
5. Copy the Extended ROM Tools CAB onto your SX66 via the Windows File Explorer on your computer.
6. Using File Explorer on your phone, navigate to the location you copied the Extended ROM Tools CAB file to, and click on the CAB to install it.
7. Once the CAB is installed, you will have a new folder in the programs group on your phone called Extrom Tools. In the folder you have six options. Click on unhide, and acknowledge the text box, and then click on unlock and acknowledge the text box again.



8. Remove you phone from the cradle, and using the stylus press the reset button on the bottom of the phone.
9. Once the phone has completely rebooted, place it back into the cradle, and allow it to resync.
10. Using Window File Explorer, navigate to the Extended_ROM folder on your mobile device:



11. Select all the files in this folder, right click the mouse, and select CUT. Paste these files in c:\EXT-Backup folder you created earlier.
12. Select all the files in the c:\EXT-ROM folder where you decompressed the new Extended ROM, right click and select copy. Paste these files in the Extended_ROM folder on your mobile device (SX66).
13. Once the copy process is complete, remove the phone from the cradle. Holding the power button on while using the stylus to press the reset button on the bottom of the phone to hard reset your phone.
14. Complete on screen steps to fully initialize your phone.

Note: should you need to restore your original Extended ROM, the steps are the same using the back up you created in the c:\EXT-Backup folder.